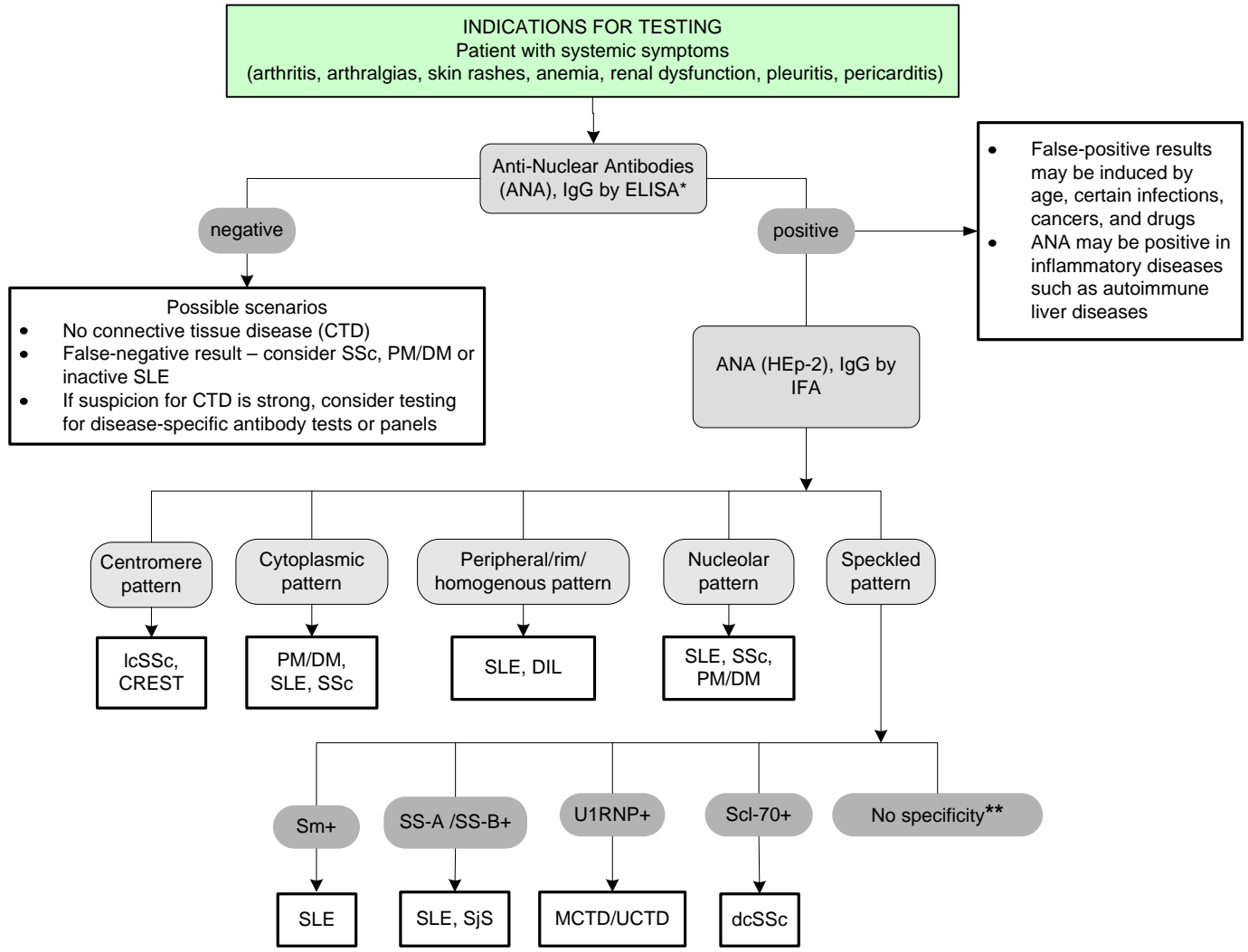


Connective Tissue Disease Testing

[Click here for topics associated with this algorithm](#)



Antibody Key	
RNP	RNP (U1) (Ribonucleic Protein) (ENA) Antibody, IgG
Scl-70	Scleroderma (Scl-70) (ENA) Antibody, IgG
Sm	Sm (ENA) Antibody, IgG
SS-A	SS-A (Ro) (ENA) Antibody, IgG
SS-B	SS-B (La) (ENA) Antibody, IgG

Disease legend	
CREST	CREST syndrome (calcinosis, Raynaud phenomenon, esophageal dysmotility, sclerodactyly and telangiectasia)
DIL	Drug-induced lupus erythematosus
dcSSc	Diffuse cutaneous scleroderma
IcSSc	Limited cutaneous scleroderma
MCTD/UCTD	Mixed connective tissue disease/Undifferentiated connective tissue disease
PM/DM	Polymyositis/Dermatomyositis
SjS	Sjögren syndrome
SLE	Systemic lupus erythematosus
SSc	Scleroderma (systemic sclerosis)

* ELISA screen detects antibodies against dsDNA, histone, SS-A (Ro), SS-B (La), Sm, RNP, Scl-70, Jo-1, centromere, and an extract of lysed HEp-2 cells
 ** Unidentified specificities or markers of low prevalence in CTD
 Note: Overlap may occur among the antibodies and diseases. Associations between ANA IFA pattern and disorders such as autoimmune hepatitis (AIH) and primary biliary cirrhosis (PBC) are not indicated