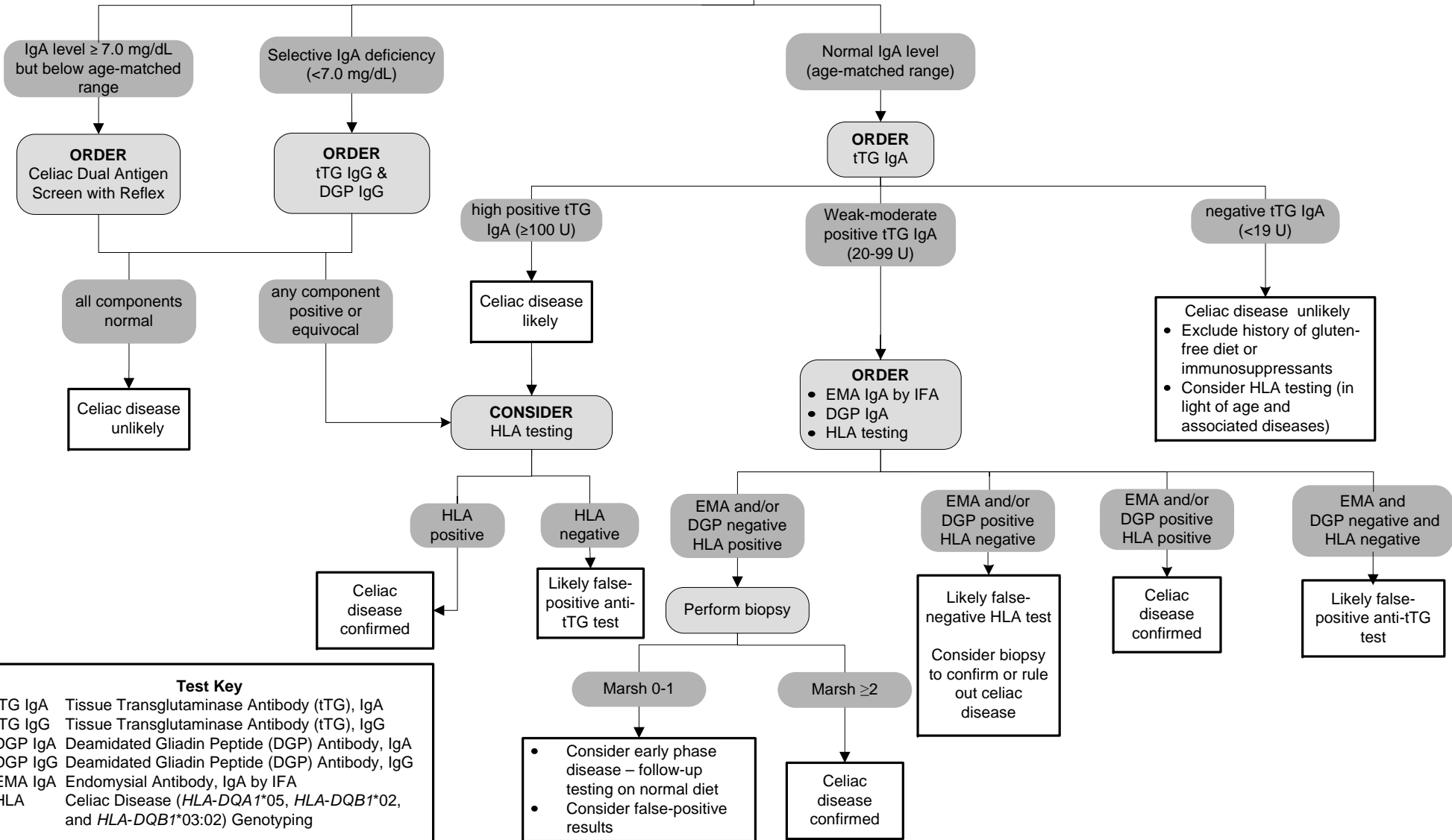


[Click here for topics associated with this algorithm](#)

**INDICATIONS FOR TESTING**

- Nonspecific symptoms (anemia, failure to thrive, fever, skin rash and weight loss)
- Diarrhea >4 weeks duration

**ORDER**  
Immunoglobulin A



**Test Key**

tTG IgA Tissue Transglutaminase Antibody (tTG), IgA  
 tTG IgG Tissue Transglutaminase Antibody (tTG), IgG  
 DGP IgA Deamidated Gliadin Peptide (DGP) Antibody, IgA  
 DGP IgG Deamidated Gliadin Peptide (DGP) Antibody, IgG  
 EMA IgA Endomysial Antibody, IgA by IFA  
 HLA Celiac Disease (HLA-DQA1\*05, HLA-DQB1\*02, and HLA-DQB1\*03:02) Genotyping